

SERVICE DIRECTORY

CONTENTS

About Us 關於我們

Accommodation 房間類型

Our Teams 團隊

In-Room Features 房間設施

Room Amenities 房間設施

- Air-Conditioner 冷氣空調
- Television 電視
- Telephone 電話
- Wifi 無線上網
- Safety Box 電子保險箱
- Hair-Dryer 吹風機
- Extension Cord 拖板(延長線)
- Torch 手電筒
- Iron and Iron Board 熨斗及熨板
- Door Sign 指示牌
- Door Lock 門鎖

Bathroom Amenities 浴室設施

- Bathroom 浴室
- Welcome Amenities 迎新沐浴用品

Kitchen Amenities 廚房設施

- Open Kitchenette 開放式廚房
-

Services & Facilities 服務和設施



General Services 一般服務

- Security Service 保安服務
- Cleaning Service 房間清潔服務
- Linen & Towels Change 更換床單及毛巾服務
- Mail Receiving Service 郵件代收服務
- Umbrella Lending Service 雨傘借用服務

Chargeable Services 額外收費服務

- Pound Laundry & Dry Cleaning Service 磅洗及乾洗服務
- Extra Bed (Single Bed) 額外加床服務 (單人床)
- Baby Cot 加嬰兒床服務
- Extra Towel 額外毛巾服務
- Extra Towel Change 額外毛巾更換服務
- Extra Linen Change 額外床單更換服務
- Photocopy 影印服務
- Printing 打印服務
- Scanning 掃描服務
- Baggage Storage 行李寄存服務
- Extra Maid Service 額外房間清潔服務
- Washing for Cooking Utensils 廚具碗碟清洗服務

Facilities 設施

- Pet-Friendly Floors 專屬寵物樓層
- Wellness Club 健身室
- Rooftop Garden 天台花園
- Self-Service Laundry 自助洗衣房

Information for Travellers 旅客資訊



Currency 貨幣

OCTOPUS Card 八達通

Telecommunication 電訊服務

Nearby Means of Transportation 附近交通服務

Transportation to Airport 機場交通

Information for In-House Guests 住客須知



In-House Guideline 住客守則

- Check In Time 入住時間
- Check Out Time 退房時間
- Smoking 吸煙
- Cooking 烹調
- Pet 寵物
- Volume 音量
- Food Delivery 外送速遞
- Visitor 訪客
- Key(s) 鑰匙咭
- Elevator 升降機
- Repairing & Maintenance 維修及保養
- Penalty 賠償



Accommodation

12 floors with 176 fully-furnished apartments offer diversified designs for individuals and families with a refined taste for living.

- Standard Executive Studio**
 (218 - 303 sq.ft *)
 Cuddle tranquility at a prime location
 Ideal space for work-at-home executives, professionals and start-up entrepreneurs
- Deluxe Executive Studio**
 (295 - 475 sq.ft *)
 Immerse yourself in the relaxation in this spacious homey studio
 Redefined work-life balance for expats, couples and corporate travelers
- Regent Heights Skyline Suite**
 (295 - 475 sq.ft * with balcony)
 Relish in the exquisite scenery of the cityscape
 Basking in the sunshine and marveling at the iconic skyline on the balconies
- Regent Heights Superior Suite**
 (515 - 628 sq.ft *)
 Sink into this capacious cocoon of bespoke elegance
 Discover the authentic essence of relaxation

*Gross area is for reference only

*Gross area is for reference only

Regent Heights Premium Suite (688 sq.ft *)

Experience relaxation in grand style above the boisterous city
 Mesmerize yourself the dazzling exclusivity of cosmopolitan lifestyle

Our Teams

Guest Relations Team
 Service Hours: 9am to 8pm
 (Monday to Sunday)
 Hotline: (852) 2895 2555

Security Team
 Service Hours: 24 Hours
 (Monday to Sunday)
 Hotline: (852) 2895 2677

Housekeeping Team
 Service Hours: 9am to 6pm
 (Monday to Sunday)
 Hotline: (852) 2895 2555

Regent Heights reserves the rights to change the Service Hours from time to time without prior notice





房間類型

樓高12層的麗晶軒位處港島重心銅鑼灣，四通八達，為住客提供舒適平衡的都市生活。176套雅緻房間，不同的設計讓住客及家人細味生活的趣味。

標準行政套房
(218 - 303 平方呎*)

尊貴地段享受愜靜

行政人員專業人士及初創企業家在家工作的理想空間

豪華行政套房
(295 - 475 平方呎*)

沉醉在家一般的放鬆

為外籍員工夫婦及商務旅客重塑平衡的生活空間

麗晶軒天際線套房
(295 - 475 平方呎*連露台)

飽覽都會迷人景致

露台上沐浴在陽光中並欣賞天際美景

麗晶軒優越套房
(515 - 628 平方呎*)

置身寬敞而典雅的搖籃

找尋放鬆的真諦

* 房間建築面積僅供參考

* 房間建築面積僅供參考

麗晶軒專尚雙房套房
(688 平方呎*)

在煩囂中體驗豪華的鬆弛

享受迷人而專尚的大都會生活

團隊

客戶服務部

服務時間：上午9時至下午8時
(星期一至星期日)

電話：(852) 2895 2555

保安部

服務時間：24小時
(星期一至星期日)

電話：(852) 2895 2677

房務部

服務時間：上午9時至下午6時
(星期一至星期日)

電話：(852) 2895 2555

麗晶軒有權隨時調整
服務時間而不另行通知

Room Amenities

Air-Conditioner	Split air conditioner with individual controlled thermostat to adjust temperature to suit your personal needs. "Beep" sound will be heard once adjusted or activated.
Television	Please refer to the TV Channel List.
Telephone	For local call only.
Wifi	Network Name and Login Password are provided on the Welcome Letter.
Safety Box	Available in the wardrobe. Instruction for use To Lock 1. Enter any 4-digit code 2. Press LOCK To Open 1. Enter the same 4-digit code *Kindly leave the safe open upon check out
Hair-Dryer	Available in the wardrobe.
Extension Cord	Available in the wardrobe.
Torch	Available in the wardrobe.
Iron and Iron Board	Subject to Request.
Door Sign	Please hang up door sign for room privacy or room cleaning.
Door Lock	Please keep the door closed and ensure the door is locked properly when you leave.



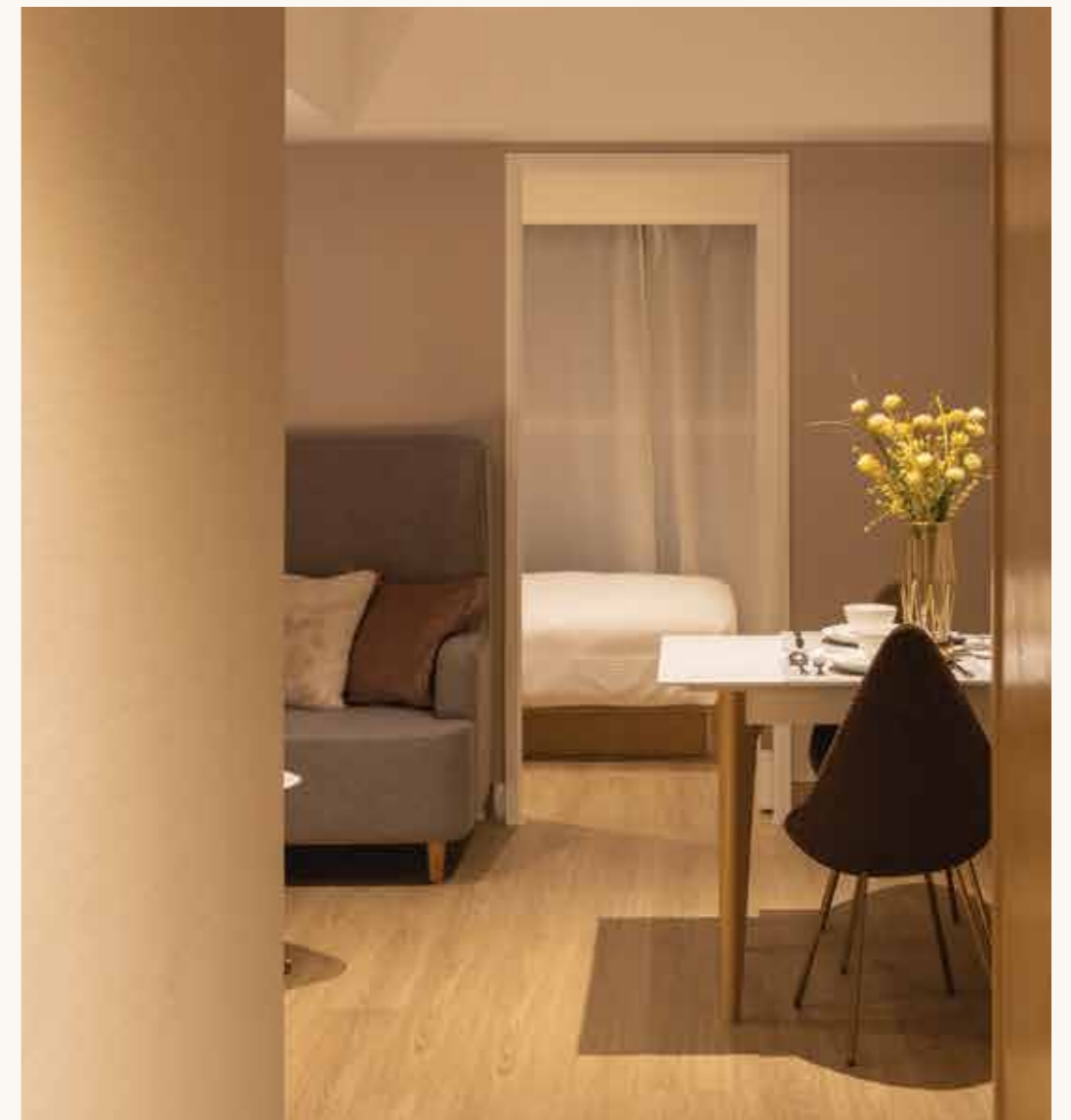
Bathroom Amenities

Bathroom Equipped with 2 sets of towels and bath mats.

Amenities A set of room amenities is available and no re-fill service will be provided.

Kitchen Amenities

Open Kitchenette Equipped with electric hotplate, microwave, refrigerator, kettle and cooking utensils.





房間設施

冷氣空調	所有房間均設有獨立分體式空調系統，住客可自由調較溫度和風力，調較時，請確認空調發出提示聲。
電視	請參閱電視節目表。
電話	只供本地通話使用。
無線上網	網絡名稱及密碼請參閱貴賓入住歡迎信。
電子保險箱	<p>放置在衣櫃內。</p> <p>使用方法:</p> <p>鎖箱</p> <ol style="list-style-type: none"> 1. 輸入自訂4位數字密碼 2. 關門，按LOCK，保險箱門自動上鎖 <p>開箱</p> <ol style="list-style-type: none"> 1. 按已自訂4位數字密碼，保險箱門自動開啟 <p>*謹記退房時將保險箱門打開</p>
吹風機	放置在衣櫃內。
拖板(延長線)	放置在衣櫃內。
手電筒	放置在衣櫃內。
熨斗及熨板	如有需要，請聯繫客戶服務部。
指示牌	如不想被打擾或需要房間清潔，請在門鎖掛上指示牌。
門鎖	房門請保持常關。離開房間時，請確保房門鎖上。



浴室設施

浴室	配備兩套毛巾及浴室地巾。
迎新沐浴用品	配備一套浴室沐浴用品，該用品是沒有補充服務的。

廚房設施

開放式廚房	配備電子煮食爐、微波爐、冰箱、水煲和基本餐具等。
-------	--------------------------



General Services

Security Service 24 hours security service is provided. Keycard(s) will be issued upon your check-in to access your studio/suite floor.

Cleaning Service Monday to Friday (Except Public Holidays)
Basic cleaning services (including emptying rubbish, dusting, vacuuming, replacing toilet paper) will be provided subject to our arrangement. For any other cleaning services upon request, such as washing cooking utensils, additional charges will apply.

Linen & Towels Change Twice a Week.

Mail Receiving Service Our Guest Relations Team will deliver the mail to your studio/suite after name check. For parcels, a message will be sent and you may collect them at our Security Counter.
**For any mails / parcels with incorrect addresses and / or unpaid delivery fee, Regent Heights will not receive them.*

Post Service Posting Box is located across the street from Regent Heights.
Stamps could be purchased at convenience stores. The Post Office is located at the Windsor House, providing convenient access.

Umbrella Lending Service Limited supply. Available at reception counter on a first come first served basis.

Chargeable Services

Outsourced Pound Laundry & Dry Cleaning Service Please leave and pay for your laundry at the Security Counter. The laundry will be delivered to your studio/suite once received. Laundry bags are available at the Security Counter.

Extra Bed (Single Bed) @HK\$300 per day / @HK\$3,000 per month
 *Subject to Request and Availability
 *Available for **Regent Heights Superior Suite** only

Baby Cot @HK\$100 per day / @HK\$1,000 per month
 *Subject to Request and Availability

Extra Towel HK\$100 per set
 (includes hand towel x 1, face towel x 1 and bath towel x 1)

Extra Towel Change HK\$100 per time
 (includes hand towel x 1, face towel x 1 and bath towel x 1)

Extra Linen Change HK\$200 per bed set
 (includes Pillow case x 2, Blanket cover x 1 and Bed Sheet x 1)

Photocopy HK\$10 per sheet (A4 Black / White)

Printing HK\$10 per sheet (A4 Black / White)
 HK\$15 per sheet (A4 Color)

Scanning HK\$10 per sheet (A4 Black / White / Color)



	Standard Studio	Deluxe Studio	Skyline Suite	Superior Suite	Premium Suite
Extra Maid Service (Per Time)	HK\$500	HK\$1,000	HK\$1,000	HK\$1,000	HK\$1,300
Washing for Cooking Utensils	HK\$100 per day — HK\$1,000 per month	HK\$150 per day — HK\$1,500 per month	HK\$150 per day — HK\$1,500 per month	HK\$200 per day — HK\$2,000 per month	HK\$250 per day — HK\$2,500 per month

• Please contact our Guest Relations Team if needed • All charges are subject to change without prior notice

Facilities



Pet-Friendly Floors

Regent Heights is a pet-friendly serviced apartment. Enjoy to accommodate with your furry best friends at our exclusive pet-friendly floors.



Wellness Club

Located on the 2/F
Opening Hours: 7am to 10pm (Monday to Sunday)

Facilities



Rooftop Garden

Located on rooftop
Opening Hours: 11am to 10pm (Monday to Sunday)



Self-Service Laundry

Located on the 2/F
Opening Hours: 8am to 11pm (Monday to Sunday)
**No washing detergent will be supplied*

• Regent Heights reserves the rights to change the Opening Hours from time totime without prior notice



一般服務

保安服務 提供24小時保安服務。住客在入住時會獲發房咭，供乘坐升降機和房間進出使用。

房間清潔服務 星期一至星期五（公眾假期除外）
麗晶軒提供和安排基本清潔服務：清理垃圾，清理灰塵，整理床舖和補充衛生紙，其他的清潔服務如清洗廚具碗碟則要另外收費。

更換床單及毛巾 每星期更換兩次。

郵件代收服務 郵件會在核對名字和房間號碼後直接送到住客房間。
如大型郵件或包裹，將會發放訊息給住客到保安櫃檯領取。
*任何未付款及名字不符的郵件或包裹將不會代收服務。

投寄郵件 郵箱位於麗晶軒對面聖保祿醫院側門外。
郵票於便利店有售。鄰近郵政局位於銅鑼灣皇室堡。

雨傘借用服務 數量有限，先到先得。
如有需要，請與客戶服部或保安部聯絡。

額外收費服務

磅洗及乾洗服務
(外判洗衣公司提供)

住客須自行將衣服交到保安櫃檯及付款。每天房務員會把送回衣服送到房間。洗衣袋可於保安櫃檯領取。

額外加床服務
(單人床)

HK\$300 (日租) / HK\$3,000 (月租)
*如有需要，請聯繫客戶服務部
*只適用於行政套房

嬰兒床

HK\$100 (日租) / HK\$1,000 (月租)
*如有需要，請聯繫客戶服務部

額外毛巾

每套HK\$100
(包括1條浴巾、1條抹手巾、1條洗面巾)

額外毛巾更換服務

每套HK\$100
(包括1條浴巾、1條抹手巾、1條洗面巾)

額外床單更換服務

每套HK\$200
(包括2個枕頭套、1張被單、1張床單)

影印服務

每張HK\$10 (A4黑 / 白)

打印服務

每張HK\$10 (A4黑 / 白)
每張HK\$15 (A4色彩)

掃描服務

每張HK\$10 (A4黑 / 白 / 色彩)



	標準 行政套房	豪華 行政套房	麗晶軒 天際線套房	麗晶軒 優越套房	麗晶軒專尚 雙房套房
額外房間清潔服務 (每次)	HK\$500	HK\$1,000	HK\$1,000	HK\$1,000	HK\$1,300
廚具碗碟清洗服務	HK\$100 每日 — HK\$1,000 每月	HK\$150 每日 — HK\$1,500 每月	HK\$150 每日 — HK\$1,500 每月	HK\$200 每日 — HK\$2,000 每月	HK\$250 每日 — HK\$2,500 每月

• 如需要以上服務，請聯繫客戶服務部 • 價格有任何修改，恕不另行通知

設施



專屬寵物樓層

麗晶軒是一間寵物友好的服務式住宅，跟您的毛小孩一同入住，享用您們的專屬樓層。



健身室

位於2樓
開放時間：上午7時至晚上10時（星期一至星期日）

設施



天台花園

位於天台
開放時間：上午11時至晚上10時（星期一至星期日）



自助洗衣房

位於2樓
開放時間：上午8時至晚上11時（星期一至星期日）
*客人需自備洗衣液。



Currency

The legal tender in Hong Kong is the Hong Kong dollar (HKD). International credit cards such as American Express, VISA, and MasterCard are also welcome at many hotels, retail shops and restaurants. Electronic payments such as Apple Pay, Android Pay, Alipay and WeChat Pay are accepted by some merchants too. Premises usually display stickers showing the credit cards and electronic payments they accept at their entrances or at the cash register.

OCTOPUS Card



Octopus is a smart contactless payment tool which is fun and easy to use, and accepted all over Hong Kong! Use it for public transport, dining, entertainment, shopping and more. You can buy an Octopus Card at the MTR stations. You may visit www.octopus.com.hk for more details.

Telecommunication

Sim Card is available at convenience stores or telecommunication service providers (i.e. csl., SmarTone, 3, China Mobile HK).

The logo for csl., consisting of the lowercase letters "csl." in a bold, orange, sans-serif font.

The logo for SmarTone, consisting of the word "SmarTone" in a bold, red, sans-serif font.



The logo for China Mobile, featuring a stylized blue and green wave icon to the left of the Chinese characters "中国移动" and the English text "China Mobile" below it.

Nearby Means of Transportation

Mass Transit Railway (MTR)



The nearest MTR station is Causeway Bay (Exit E & Exit F1). Besides, Tin Hau MTR station (Exit A) is only 5 to 10-minute walk from our serviced apartment.

For more information, please contact our Guest Relations Team or visit www.mtr.com.hk

Buses



City Bus, New World First Bus and Kowloon Motor Bus are the franchised bus companies mainly provided public bus services in Hong Kong. The nearest bus stops are located at St. Paul's Hospital, Central Library and Victoria Park. You can feel free to travel around Hong Kong Island and Kowloon by buses.

For more information, please contact our Guest Relations Team or visit below websites:

City Bus & New World First Bus: <http://www.nwstbus.com.hk>

Kowloon Motor Bus: <http://www.kmb.hk>

Hong Kong Tramways

Hong Kong Tramways is available in Hong Kong Island only. There are a few tram stops nearby. Fares can be paid by Octopus Cards or Cash when disembarking from the front exit of the tram. Below are 6 main routes running between Kennedy Town and Shau Kei Wan daily:

- | | | |
|------------------|---|--------------|
| ① Western Market | ⇄ | Shau Kei Wan |
| ② Happy Valley | ⇄ | Shau Kei Wan |
| ③ Shek Tong Tsui | ⇄ | North Point |
| ④ Shek Tong Tsui | ⇄ | Causeway Bay |
| ⑤ Kennedy Town | ⇄ | Happy Valley |
| ⑥ Kennedy Town | ⇄ | Shau Kei Wan |

For more information, please contact our Guest Relations Team or visit www.hktramways.com

Taxi

Please take a taxi in front of our Main Entrance or contact below recommended taxi centre for appointment.

Hong Kong Taxi Centre Tel: 2574 7311

ABA Taxi Radio Call Services Centre Tel: 2729 6600

Transportation to Airport

By Bus **Approximate 1.5 hours** from below Bus Stops to Airport Terminal
Route No. E11 - Bus Stop at Central Library
Route No. N11 - Bus Stop at St. Paul's Hospital

By MTR **Approximate 45 mins** from Causeway Bay station to Airport Station

By Taxi **Approximate 40 mins** from Regent Heights to Airport Taxi Stop



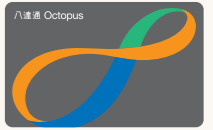


貨幣

香港的法定貨幣是港幣(\$)，港幣跟美元掛鈎。

美國運通卡、VISA卡、萬事達卡等國際通行的信用卡，也可以在一般酒店、商店和餐館使用。另外，部分商場、百貨公司及連鎖店亦接受行動支付服務（例如：Apple Pay、Android Pay、支付寶和微信支付等）。接受以上信用卡和行動支付服務的商戶，都會把相關標誌張貼在商店入口或收銀處，以資識別。

八達通



八達通是一款全港通用的非接觸式支付工具，應用範圍遍佈公共交通、食肆、娛樂設施、零售商戶等，讓您在香港旅遊時享受方便省時、簡單易用的付款體驗。

詳情請參閱 www.octopus.com.hk

電訊服務

電話卡在便利店有售。而CSL、數碼通、3香港或中國移動香港等電訊供應商也提供不同的電訊服務以及銷售手機和配件。



SmarTone



中国移动
China Mobile

附近交通服務

港鐵 (MTR)



港鐵是香港最大的鐵路運輸系統。銅鑼灣站 (E或F1出口) 和天后站 (A出口) 是鄰近麗晶軒的港鐵站，只需5至10分鐘便可到達。詳情請聯繫客戶服務部或瀏覽港鐵網頁 www.mtr.com.hk

公共巴士



香港主要有3間公司提供巴士服務，包括城巴、新世界第一巴士 (新巴) 及九龍巴士 (九巴)。鄰近的巴士站位於聖保祿醫院、中央圖書館和維多利亞公園。住客可以乘坐公共巴士暢遊香港。

詳情請聯繫客戶服務部或瀏覽以下網頁：

城巴及新世界第一巴士 (新巴)：<http://www.nwstbus.com.hk>

九龍巴士 (九巴)：<http://www.kmb.hk>

香港電車

香港電車是來往香港島東區至西區的路面電車系統。鄰近有多個電車站。下車時需在電車的前閘以八達通或現金繳付車資。以下是6條路線地點：

- | | | | |
|---|----------|---|-----|
| 1 | 上環 (西港城) | ⇄ | 筲箕灣 |
| 2 | 跑馬地 | ⇄ | 筲箕灣 |
| 3 | 石塘咀 | ⇄ | 北角 |
| 4 | 石塘咀 | ⇄ | 銅鑼灣 |
| 5 | 堅尼地城 | ⇄ | 跑馬地 |
| 6 | 堅尼地城 | ⇄ | 筲箕灣 |

詳情請聯繫客戶服務部或瀏覽香港電車網頁 www.hktramways.com

計程車 (的士)

如需乘搭計程車，可在麗晶軒大門外等候；或透過電話聯繫以下計程車公司預約。

詳情請聯繫客戶服務部。

的士中心 電話：2574 7311

衛星的士電召服務中心 電話：2729 6600

機場交通

巴士 由銅鑼灣巴士站出發，約1.5小時可到達機場巴士站

E11 - 巴士站位於中央圖書館

N11 - 巴士站位於聖保祿醫院

港鐵 (MTR) 由銅鑼灣地鐵站出發約45分鐘可達機場站

的士 由麗晶軒出發約40分鐘可達機場



INFORMATION
FOR IN-HOUSE GUESTS

住客須知

In-house Guideline

Smoking	Indoor Smoking is not allowed.
Cooking	All Food and Beverage with strong smell shall be excluded to prevent cooking odours.
Pet	Pet owners are liable to accompany their pets and keep them on leash in public area. They must make their efforts to keep their pets quiet, particularly during the night so they do not disturb the others.
Volume	Please turn down the volume in the studio/suites and public area.
Food Delivery	Food Delivery will be placed at the lobby.
Visitor	Please inform our Guest Relations Team or Security Guards before the arrival of visiting guests.
Key(s)	Keycard(s) should be returned to our Guest Relations Team upon check-out. Penalty of HK\$100 per keycard will be charged for any loss.
Elevator	Please place your keycard over the panel to access your studio / suite floor.
Repairing & Maintenance	Please contact our Guest Relations Team for appliance failures. Our on-site technicians will provide assistance.
Penalty	For any damage or loss of in-room item(s), there will be a penalty subject to the Price List.

* In case of any dispute, Regent Heights has the right of final decision



住客須知

吸煙	室內禁止吸煙
烹調	為免影響他人，不建議烹調任何帶有強烈氣味的食物。
寵物	為免影響他人，請盡力讓寵物保持安靜（特別是晚上時間）。而在公眾地方，寵物必需由主人陪同和約束。
音量	請於房間內減低聲量，以免對其他住客做成滋擾。
外送速遞	外送速遞會被置放在大堂，住客需到大堂領取。
訪客	如有訪客，請預先通知客戶服務部或保安員，核對身份後會協助訪客到達各樓層。
鑰匙咭	住客需要在退房時交回所有房咭。 如有遺失，請立即報失及繳付每張HK\$100元。
升降機	以房咭輕拍黑色接觸板，並按下樓層。
維修及保養	房間設施如有損壞，請聯繫客戶服務部安排當值技工跟進。
賠償	若房內物品有所損壞，住客必須按麗晶軒價目表賠償。

* 如有任何爭議，麗晶軒保留最終決定權。

